

Tuba

Oakdale - Closer

arr. Thompson

 $\text{♩} = 100$

15 **A** *f* *p* *mp*

26 **B** $\text{♩} = 132$ *f* *ff* *mf*

36 **C** *f*

48 **D** 14 14 *f*

83 **E** $\text{♩} = 176$ *p*

91

100 **F** *mf*

109

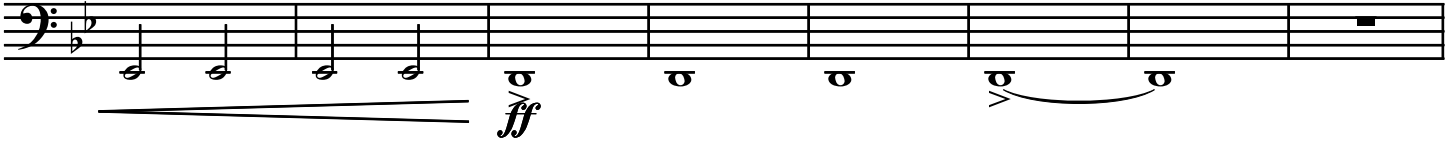
118 **G** *f*

Oakdale - Closer

2
128



136



144 H



152

